

25th Meridian East

George Dousis in collaboration with Padou Mayuma

Composed for the CREA-CULT-2021-COOP Project

“B-Me - Blending Melodies: Bridging cultural identities”

Reference: 101055770

*Commissioned by Sistema Cyprus, El Sistema Greece &
Associação das Orquestras Sinfónicas Juvenis Sistema
Portugal (AOSJSP)*



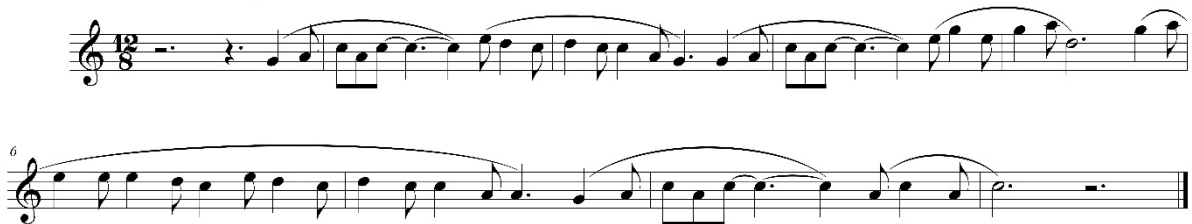
25th Meridian East is a work composed for the Beginner - Early intermediate-level orchestra of Sistema Cyprus.

After working with the musician Padou who originates from Congo, I ended up writing a piece which blends two folk melodies, one from Congo and one from Greece.

The title of the piece comes from the **25th Meridian East of Greenwich**, which runs both countries, Greece and Congo.

George Dousis
georgedousis.com

Congo's folk theme
"Kina Nunga ko"



Greek folk theme
"Lianochortaroudia"



"25th Meridian East"

Transposition applied

25th Meridian East

Dynamics are optional,
ignore if not convenient

for beginner - early intermediate
level orchestra

George Dousis

Athens, December 2022

Introduction

♩ = 104

Flute I

Oboe I

Clarinet in B \flat I

Alto Sax

Bassoon I

Horn in F I

Trumpet in B \flat

Trombone I

Euphonium

Tuba

Timpani

Perc.I

Percussion

Glockenspiel

Perc.II

Guiro

Marimba

Perc.III

Percussion

Chimes

Percussion IV

Violin I

Violin II

Viola

Cello

Contrabass

A. Exposition

Congo's folk theme partial

10

Fl. I

Ob. I

B♭ Cl. I

A. Sx.

Bsn. I

10

Hn. I

B♭ Tpt.

Tbn. I

Euph.

Tuba

Perc. I

Perc.

Glk.

Perc. II

Gro.

Mmb.

Perc. III

Perc.

Perc. IV

10

Vln. I

Vln. II

Vla.

Vc.

Cb.

Fl. I

Ob. 1

B♭ Cl. I

A. Sx.

Bsn. 1

pp *mp* *pp*

Congo's folk theme (partial)

p

Congo's folk theme (partial)

mp *pp* *p*

Congo's folk theme (partial)

p

Hn. 1

B♭ Tpt.

Tbn. 1

Euph.

Tuba

pp *mp* *pp*

ord.

p *mp* *p*

mp *p* *mp* *p*

p *mp* *p*

Perc. I Perc.

Glk.

Perc. II Gro.

Mrb.

Perc. III Perc.

Perc. IV

Vln. I

Vln. II

Vla.

Vc.

Cb.

mp *pp* *pp* *mp* *pp*

mp *pp* *mp* *pp*

mp *pp* *mp* *pp*

mp *pp* *mp* *p*

pp *mp* *p*

24

Fl. I *p* *pp* *mp*

Ob. I *pp*

B♭ Cl. I *p* *pp* *mp*

A. Sx. *p*

Bsn. I *p* *mp*

24

Hr. I *mp*

B♭ Tpt. *pp*

Tbn. I *pp*

Euph. *pp*

Tuba *pp*

Perc. I Perc. *pp*

Glk. *mp*

Perc. II Gro.

Mmb. *mp*

Perc. III Perc.

Perc. IV

24

Vln. I *p* *pp* *mp* *pp*

Vln. II *mp* *pp* *mp* *pp*

Vla. *p* *mp*

Vc. *p* *mp*

Cb. *p* *mp*

div.

31

Fl. 1
 Ob. 1
 B♭ Cl. 1
 A. Sx.
 Bsn. 1

31

Hn. 1
 B♭ Tpt.
 Tbn. 1
 Euph.
 Tuba
 Perc. I
 Perc.
 Glk.
 Perc. II
 Mrmb.
 Perc. III
 Perc.
 Perc. IV

31

Vln. I
 Vln. II
 Vla.
 Vc.
 Cb.

38

Greek folk theme partial

Fl. I

Ob. I

B♭ Cl. I

A. Sx.

Bsn. I

p

p

p

p

p

mp

Greek folk theme (partial)

Greek folk theme (partial)

38

Hn. I

B♭ Tpt.

Tbn. I

Euph.

Tuba

p

p

p

p

Perc. I

Perc.

Glk.

Perc. II

Mrb.

Perc. III

Chm.

Perc. IV

p

38

Vln. I

Vln. II

Vla.

Vc.

Cb.

pp

pp

pp

pp

p

p

p

p

mp

mp

mp

mp

p

p

45

Fl. 1

Ob. 1

B♭ Cl. 1

A. Sx.

Bsn. 1

45

Hr. 1

B♭ Tpt.

Tbn. 1

Euph.

Tuba

Greek folk theme (partial)

mp

p

Perc. I

Perc.

Glk.

Perc. II

Perc.

Perc. III

Chm.

Perc. IV

mp

pp

sus.cymbal

45

Vln. I

Vln. II

Vla.

Vc.

Cb.

p

mp

mp

51

Congo's folk theme full

Fl. 1

Ob. 1

B♭ Cl. 1

A. Sx.

Bsn. 1

51

Hn. 1

B♭ Tpt.

Tbn. 1

Euph.

Tuba

Perc. I

Perc. II

Perc. III

Chm.

Perc. IV

51

Vln. I

Vln. II

Vla.

Vc.

Cb.

58

Fl. 1

Ob. 1

B♭ Cl. 1

A. Sx.

Bsn. 1

58

Hn. 1

B♭ Tpt.

Tbn. 1

Euph.

Tuba

Perc. I
Perc.

Glk.
Perc. II

Mrb.

Perc. III
Perc.

Perc. IV

58

Vln. I

Vln. II

Vla.

Vc.

Cb.

66

Fl. I *ff*

Ob. I *ff*

B♭ Cl. I *f*

A. Sx. *f*

Bsn. I *f*

66

Hr. I *f*

B♭ Tpt. *ff*

Tbn. I *f*

Euph. *f*

Tuba *f*

66

Timp. *f*

Perc. I *f*

Perc. II *f*

Perc. III *f*

Perc. IV *f* (snare drum) *p* (triangle)

66

Vln. I *ff*

Vln. II *ff*

Vla. *ff*

Vc. *f*

Cb. *f*

73

Bridge Greek folk theme partial

Fl. I *f* *mp* *p*

Ob. I *f* *mp*

B♭ Cl. I *mf* *p*

A. Sx. *p*

Bsn. I *p* *mp* *Greek folk theme (A) solo*

73

Hn. I *mp*

B♭ Tpt. *mp*

Tbn. I *mp*

Euph.

Tuba

73

Timp. Perc. I

Perc.

Glk. Perc. II *p*

Perc.

Perc. III Chm. *pp* *mp* *pp*

Perc. IV

73

Vln. I *p* *mf* *pp*

Vln. II *p* *mf* *pp* *mp*

Vla. *mp*

Vc. *p*

Cb.

81

Fl. 1
Ob. 1
B♭ Cl. 1
A. Sx.
Bsn. 1

81

Hn. 1
B♭ Tpt.
Tbn. 1
Euph.
Tuba

81

Timp.
Perc. I
Perc.
Glk.
Perc. II
Perc. III
Chm.
Perc. IV

81

Vln. I
Vln. II
Vla.
Vc.
Cb.

88

Fl. 1

Ob. 1

B♭ Cl. 1

A. Sx.

Bsn. 1

p

Greek folk theme (partial)

mp

88

Hn. 1

B♭ Tpt.

Tbn. 1

Euph.

Tuba

Greek folk theme (partial)

mp

p

mp

p

88

Timp.

Perc. I

Perc.

Glk.

Perc. II

Mrb.

Perc. III

Perc.

Perc. IV

p

pp

p

sus. cymbal 1

88

Vln. I

Vln. II

Vla.

Vc.

Cb.

95

Fl. I
Ob. I
B♭ Cl. I
A. Sx.
Bsn. I

95

Hn. I
B♭ Tpt.
Tbn. I
Euph.
Tuba

Greek folk theme (partial)

mp *p* *mp* *p*

95

Timp.
Perc. I
Perc.
Glk.
Perc. II
Perc. III
Perc. IV

Greek folk theme (partial)

pp *p* *pp* *p*

sus. cymbal 2
sus. cymbal 1

95

Vln. I
Vln. II
Vla.
Vc.
Cb.

= 80

Congo's folk theme full

102

Fl. 1

Ob. 1

B \flat Cl. 1

A. Sx.

Bsn. 1

ff

Congo's folk theme full

ff

Congo's folk theme full

ff

102

Hn. 1

B \flat Tpt.

Tbn. 1

Euph.

Tuba

ff

Greek folk theme (A)

ff

Greek folk theme (A)

ff

102

Timp.

Perc. I

Perc.

Glk.

Perc. II

Perc. III

Perc. IV

pp

pp

102

Vln. I

Vln. II

Vla.

Vc.

Cb.

pp

C. Recapitulation

Greek folk theme (B) + Congo's folk theme full

109

Fl. I

Ob. I

B♭ Cl. I

A. Sx.

Bsn. I

109

Hn. I

B♭ Tpt.

Tbn. I

Euph.

Tuba

109

Timp. Perc. I

Perc. II

Glk. Perc. II

Perc. III

Perc. IV

109

Vln. I

Vln. II

Vla.

Vc.

Cb.

118

Fl. 1

Ob. 1

B♭ Cl. 1

A. Sx.

Bsn. 1

rit.

f

mf

mf

ff

118

Hn. 1

B♭ Tpt.

Tbn. 1

Euph.

Tuba

mf

ff

mf

f

mf

118

Timp.

Perc. I

Perc.

Glk.

Perc. II

Perc. III

Perc. IV

p

f

p

f

f

triangle

118

Vln. I

Vln. II

Vla.

Vc.

Cb.

mf

mf

mf

mf

mf

Slower

126

♩ = 70

Fl. I
Ob. I
B♭ Cl. I
A. Sx.
Bsn. I

126

Hn. I
B♭ Tpt.
Tbn. I
Euph.
Tuba

126

Perc. I Timp.
Glk.
Perc. II Gro. (sus.cymbal)
Chm. Perc. III
Perc. IV (snare drum)

126

Vln. I
Vln. II
Vla.
Vc.
Cb.